

Progression Report

UCAS

Client Name: Sector Report

Report Type: Progression Report

Cycles Included: 2010 2011 2012 2013 2014

Technical Notes and Definitions

Note: Age Groups

The definition used for applicant age has changed to be in line with UCAS's other products. Data from previous reports may differ due to this.

Note: Provider Tariff Group

This report uses the Tariff group of the provider for classification instead of legacy Mission Groups. The grouping of providers based on the average levels of attainment of their accepted applicants (summarised through UCAS Tariff points) in a period of application cycles spanning from 2004 to 2011. Each group of providers accounted for around a third of all UK 18 year old acceptances in these cycles. Split by the following values: 'Higher', 'Medium', 'Lower'.

Note: Applicants and Buzz Words

An applicant is only assigned to a school if they used that school's buzz word when making an application.

Note: Graph Clarity

For graphs with many groups, only groups with 10 or more applicants in any given year will be plotted to maintain graph clarity.

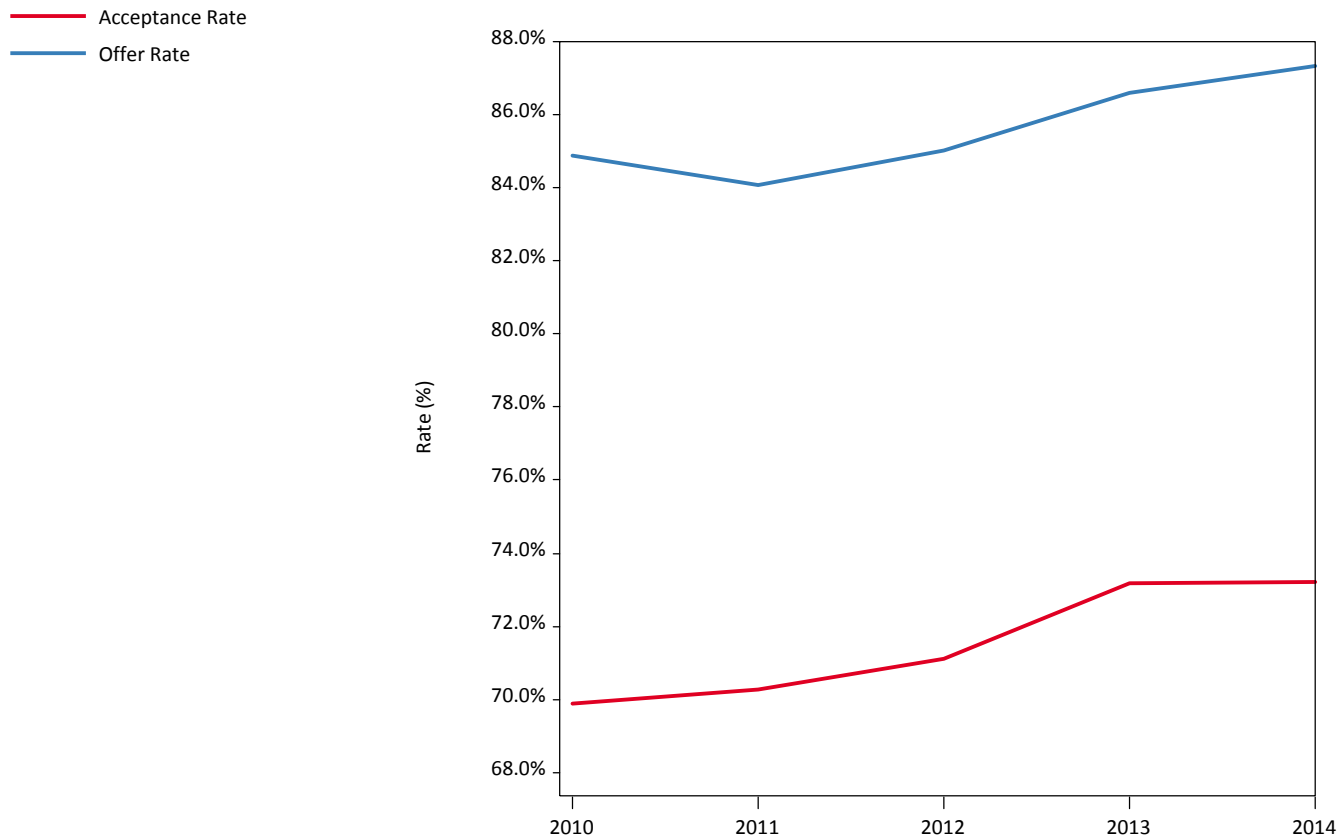
Note: Glossary

A glossary page is located at the end of the report.

1. Summary

1.1 - Offer and Acceptance Rates Graph

Graph shows offer and acceptance rates for the applicants.



1.2 - Summary Statistics Data Table

Table shows summary statistics for applicants, offers, and acceptances.

	2010	2011	2012	2013	2014
Applicants	697,350	700,160	653,635	677,375	699,685
Main Scheme Applicants	657,955	667,950	616,520	635,780	658,895
Applications Made	2,720,500	2,847,010	2,636,250	2,711,870	2,824,540
Applicants Offered	558,465	561,635	524,135	550,555	575,505
Total Offers	1,609,485	1,628,340	1,578,955	1,714,590	1,815,950
Acceptances	487,330	492,030	464,910	495,595	512,370

1.3 - Summary Statistics Rates Table

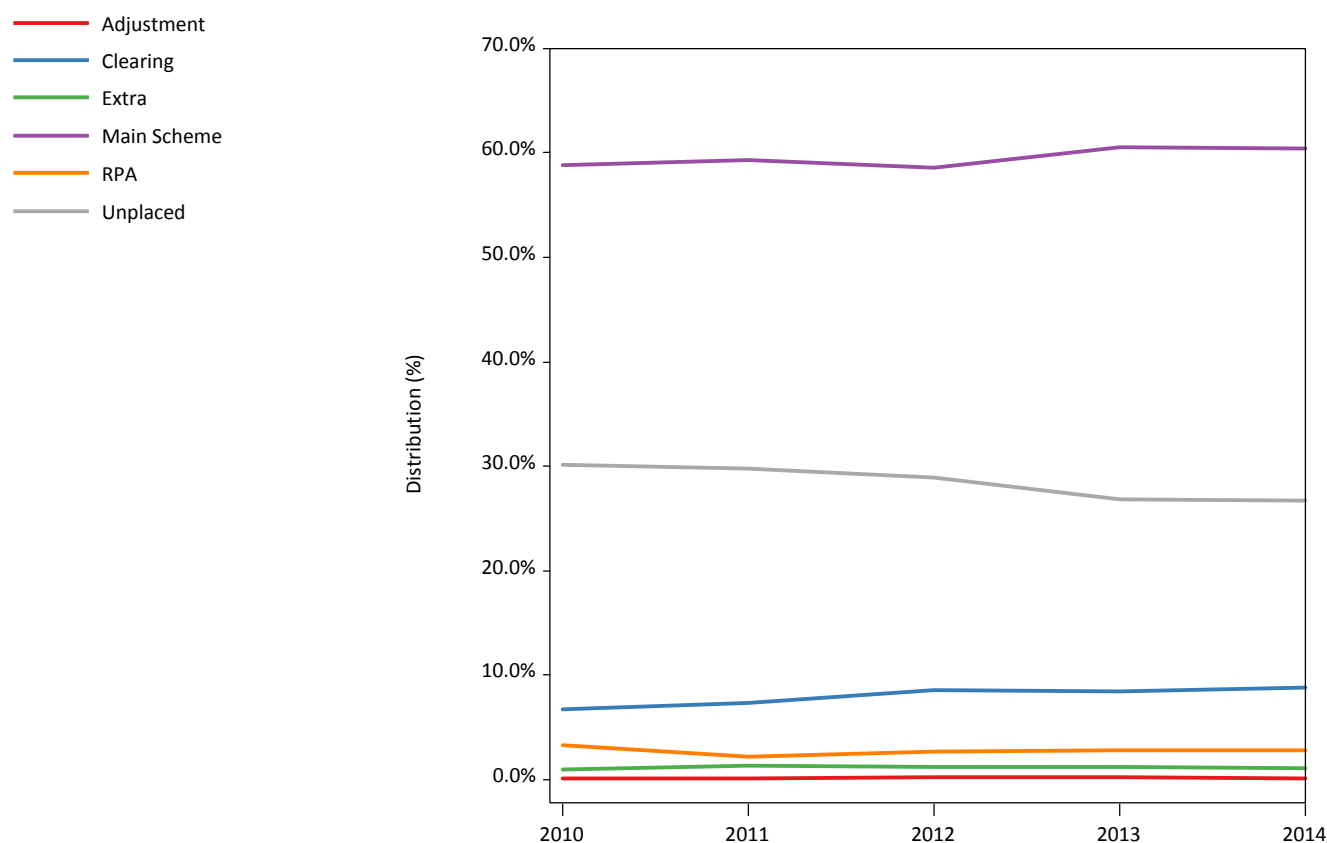
Table shows offer and acceptance rates for the applicants.

	2010	2011	2012	2013	2014
Acceptance Rate	69.9%	70.3%	71.1%	73.2%	73.2%
Offer Rate	84.9%	84.1%	85.0%	86.6%	87.3%

2. Acceptance Route

2.1 - Acceptance Route Graph

Graph shows the acceptance route distributions for applicants.



2.2 - Acceptance Route Data Table

Table shows numbers for the different acceptance route options.

Route	2010	2011	2012	2013	2014
Adjustment	375	550	1,330	1,220	1,160
Clearing	46,925	51,170	55,720	57,100	61,305
Extra	7,020	9,535	7,860	7,815	7,620
Main Scheme	409,995	415,340	382,535	410,385	422,495
RPA	23,015	15,430	17,465	19,080	19,785
Unplaced	210,020	208,130	188,725	181,775	187,315
Total	697,350	700,160	653,635	677,375	699,685

2.3 - Acceptance Route Distributions Table

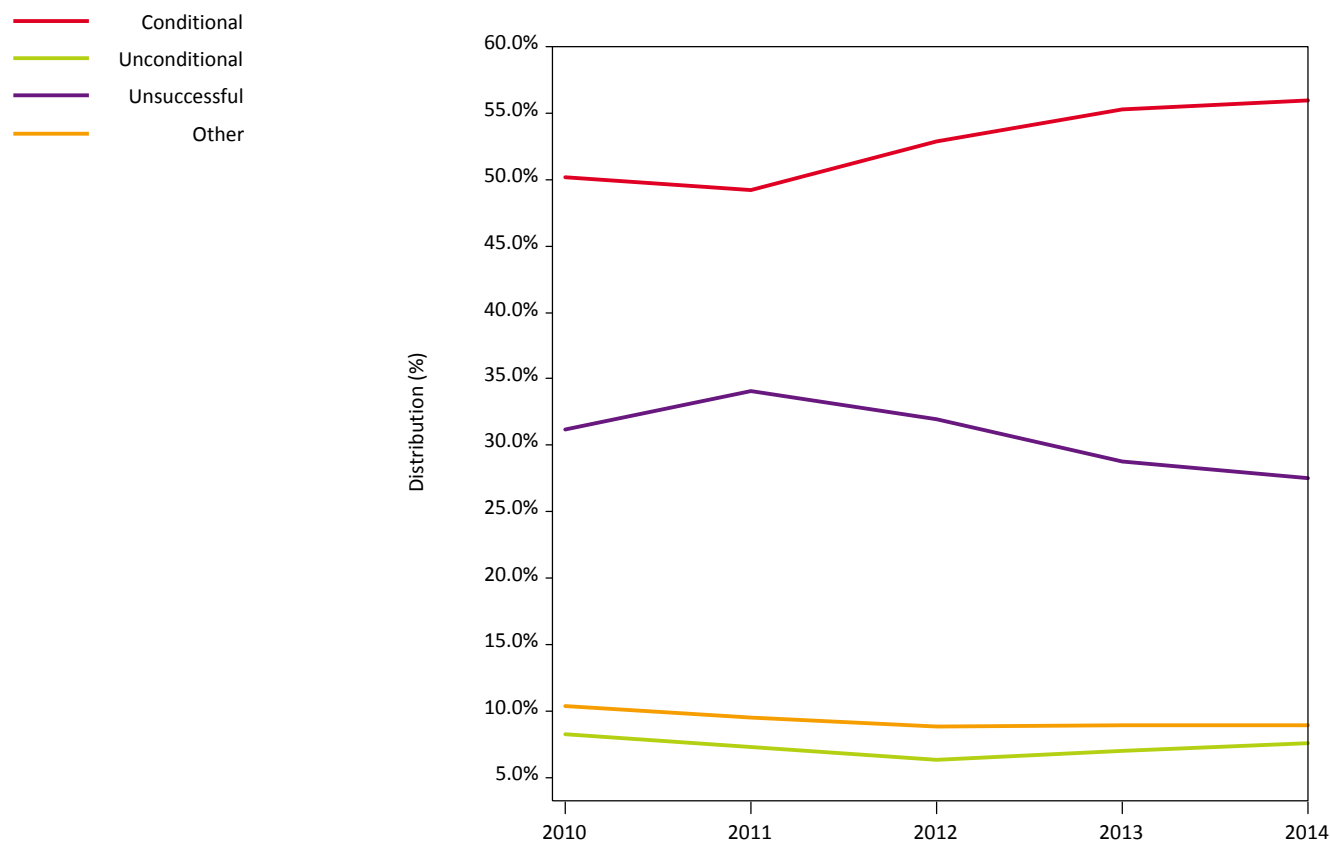
Table shows percentages for the acceptance route distributions.

Route	2010	2011	2012	2013	2014
Adjustment	0.1%	0.1%	0.2%	0.2%	0.2%
Clearing	6.7%	7.3%	8.5%	8.4%	8.8%
Extra	1.0%	1.4%	1.2%	1.2%	1.1%
Main Scheme	58.8%	59.3%	58.5%	60.6%	60.4%
RPA	3.3%	2.2%	2.7%	2.8%	2.8%
Unplaced	30.1%	29.7%	28.9%	26.8%	26.8%

3. Universities and Colleges Decisions

3.1 - Universities and Colleges Decisions Distribution Graph

Graph shows the universities and colleges decisions distribution split by decision status at the June 30th deadline.



3.2 - Universities and Colleges Decisions Data Table

Table shows numbers for the universities and colleges decision status at the June 30th deadline.

Decision	2010	2011	2012	2013	2014
Conditional	1,363,650	1,399,595	1,392,440	1,499,280	1,580,500
Unconditional	224,970	206,580	167,925	191,300	213,295
Unsuccessful	848,670	971,220	843,655	779,655	778,465
Other	283,205	269,620	232,230	241,635	252,280

3.3 - Universities and Colleges Decisions Distribution Table

Table shows distribution for the different universities and colleges decision at the June 30th deadline.

Decision	2010	2011	2012	2013	2014
Conditional	50.1%	49.2%	52.8%	55.3%	56.0%
Unconditional	8.3%	7.3%	6.4%	7.1%	7.6%
Unsuccessful	31.2%	34.1%	32.0%	28.7%	27.6%
Other	10.4%	9.5%	8.8%	8.9%	8.9%

4. Applicant Reply

4.1 - Applicant Reply Distribution Graph

Graph shows the applicant reply distribution split by reply status at the June 30th deadline.



4.2 - Applicant Reply Data Table

Table shows numbers for the applicant reply at the June 30th deadline.

Applicant Reply	2010	2011	2012	2013	2014
Firm Reply	488,435	493,195	457,165	480,690	502,965
Insurance Reply	310,145	325,930	312,815	331,865	343,550
Decline	763,990	759,935	764,220	849,485	919,435
Other	1,157,920	1,267,950	1,102,050	1,049,830	1,058,590

4.3 - Applicant Reply Distribution Table

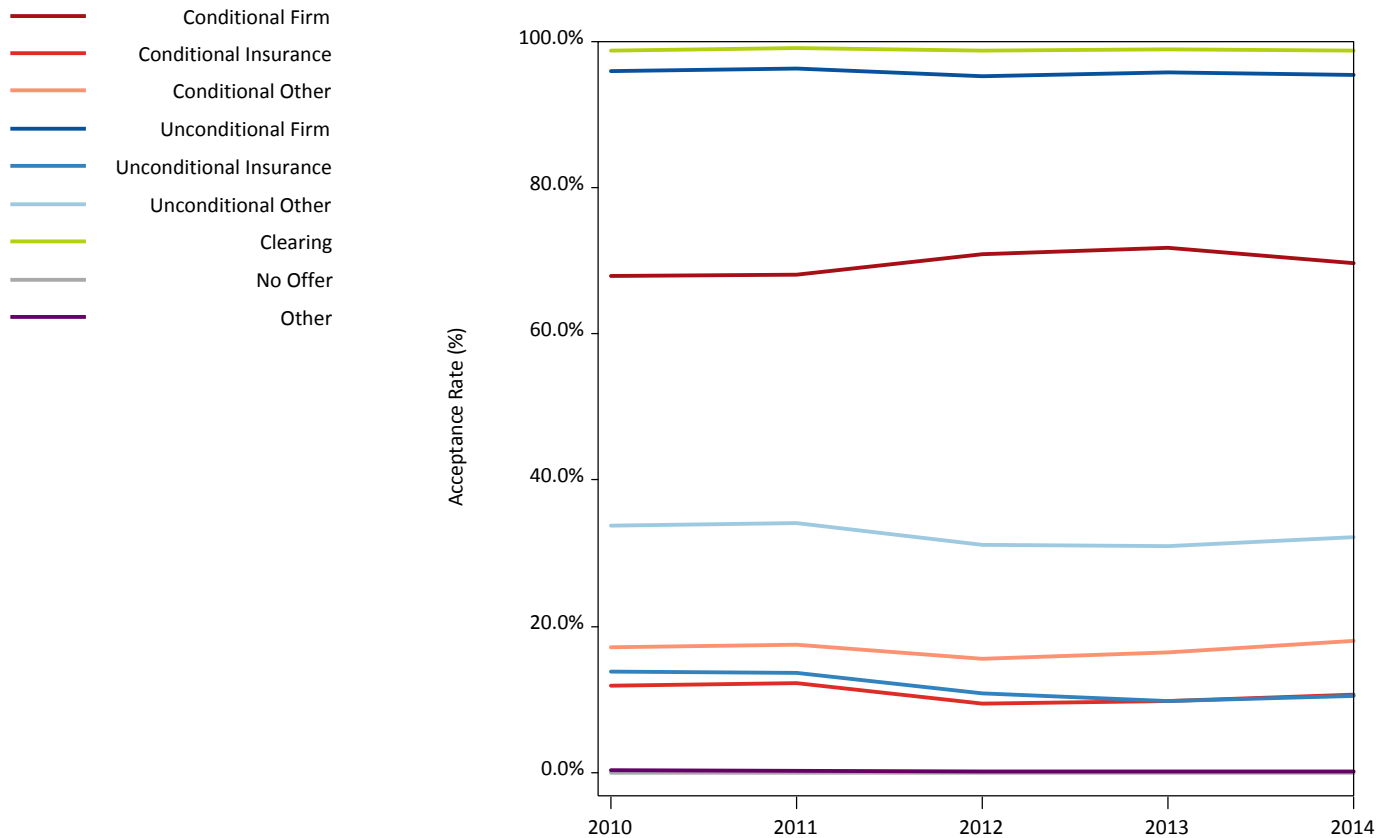
Table shows distribution for the applicant reply at the June 30th deadline.

Applicant Reply	2010	2011	2012	2013	2014
Firm Reply	18.0%	17.3%	17.3%	17.7%	17.8%
Insurance Reply	11.4%	11.4%	11.9%	12.2%	12.2%
Decline	28.1%	26.7%	29.0%	31.3%	32.6%
Other	42.6%	44.5%	41.8%	38.7%	37.5%

5. Decision & Response

5.1 - Decision and Response Graph

Graph shows acceptance rates split by decision and response status.



5.2 - Decision and Response Acceptance Rates Table

Table shows acceptance rates split by decision and response status.

Decision & Response	2010	2011	2012	2013	2014
Conditional Firm	67.9%	68.2%	70.9%	71.8%	69.6%
Conditional Insurance	12.0%	12.3%	9.5%	9.9%	10.7%
Conditional Other	17.1%	17.6%	15.5%	16.5%	18.1%
Unconditional Firm	96.0%	96.4%	95.2%	95.7%	95.5%
Unconditional Insurance	13.9%	13.7%	10.8%	9.9%	10.4%
Unconditional Other	33.9%	34.2%	31.1%	30.9%	32.1%
Clearing	98.8%	99.1%	98.7%	98.9%	98.7%
No Offer	0.0%	0.0%	0.0%	0.0%	0.0%
Other	0.3%	0.2%	0.1%	0.2%	0.2%

5.3 - Decision and Response Data Table

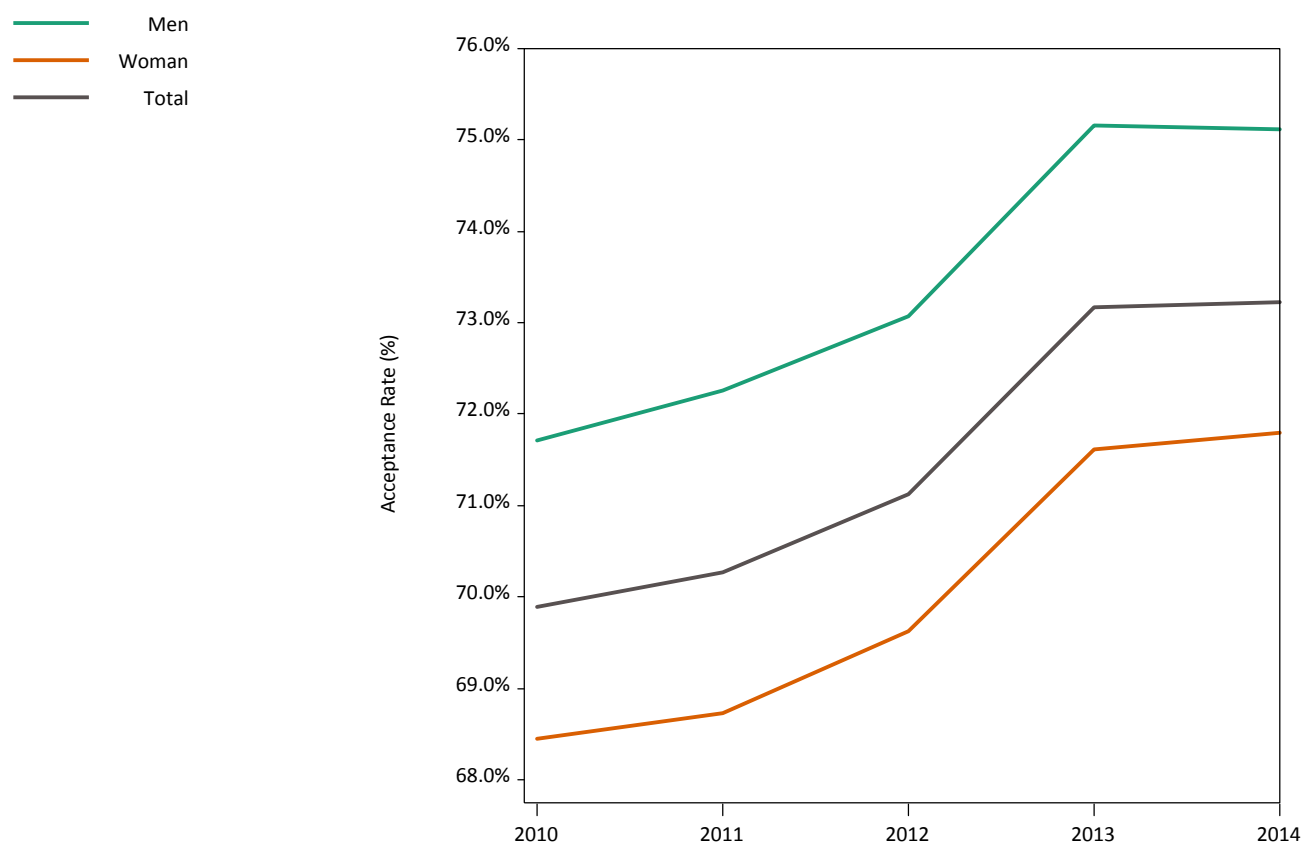
Table shows numbers for the different decisions and responses.

Decision & Response		2010	2011	2012	2013	2014
Conditional Firm	Applicants	392,420	408,145	388,115	404,945	417,990
	Applicants Accepted	266,355	278,245	275,070	290,600	290,895
Conditional Insurance	Applicants	297,700	313,235	301,560	320,100	327,590
	Applicants Accepted	35,630	38,510	28,685	31,575	34,975
Conditional Decline	Applicants	603,195	611,525	626,875	698,820	756,885
	Applicants Accepted	80	95	100	135	105
Conditional Other	Applicants	19,965	21,560	21,520	22,875	22,085
	Applicants Accepted	3,415	3,790	3,340	3,770	3,995
Unconditional Firm	Applicants	135,925	120,705	104,615	114,220	123,235
	Applicants Accepted	130,475	116,305	99,585	109,360	117,635
Unconditional Insurance	Applicants	13,245	13,655	12,135	12,915	16,965
	Applicants Accepted	1,835	1,870	1,315	1,275	1,765
Unconditional Decline	Applicants	95,455	86,965	68,345	84,415	91,585
	Applicants Accepted	20	25	20	20	25
Unconditional Other	Applicants	7,915	7,360	6,395	7,360	7,670
	Applicants Accepted	2,680	2,515	1,990	2,275	2,465
Clearing	Applicants	46,505	50,510	55,125	56,620	60,840
	Applicants Accepted	45,950	50,040	54,405	55,990	60,045
No Offer	Applicants	876,915	1,005,715	869,180	806,445	805,390
	Applicants Accepted	0	0	0	0	0
Other	Applicants	329,745	310,110	285,880	288,415	304,940
	Applicants Accepted	890	640	405	600	460

6. Sex - Acceptances

6.1 - Acceptance Rates by Sex Graph

Graph shows acceptance rates split by sex.



6.2 - Sex Acceptances Data Table

Table shows numbers for applicants and acceptances split by sex.

Sex		2010	2011	2012	2013	2014
Men	Applicants	306,905	307,065	285,070	295,450	302,600
	Applicants Accepted	220,085	221,875	208,285	222,070	227,290
Woman	Applicants	390,445	393,095	368,570	381,920	397,085
	Applicants Accepted	267,245	270,155	256,625	273,530	285,080
Total	Applicants	697,350	700,160	653,635	677,375	699,685
	Applicants Accepted	487,330	492,030	464,910	495,595	512,370

6.3 - Sex Acceptance Rates Table

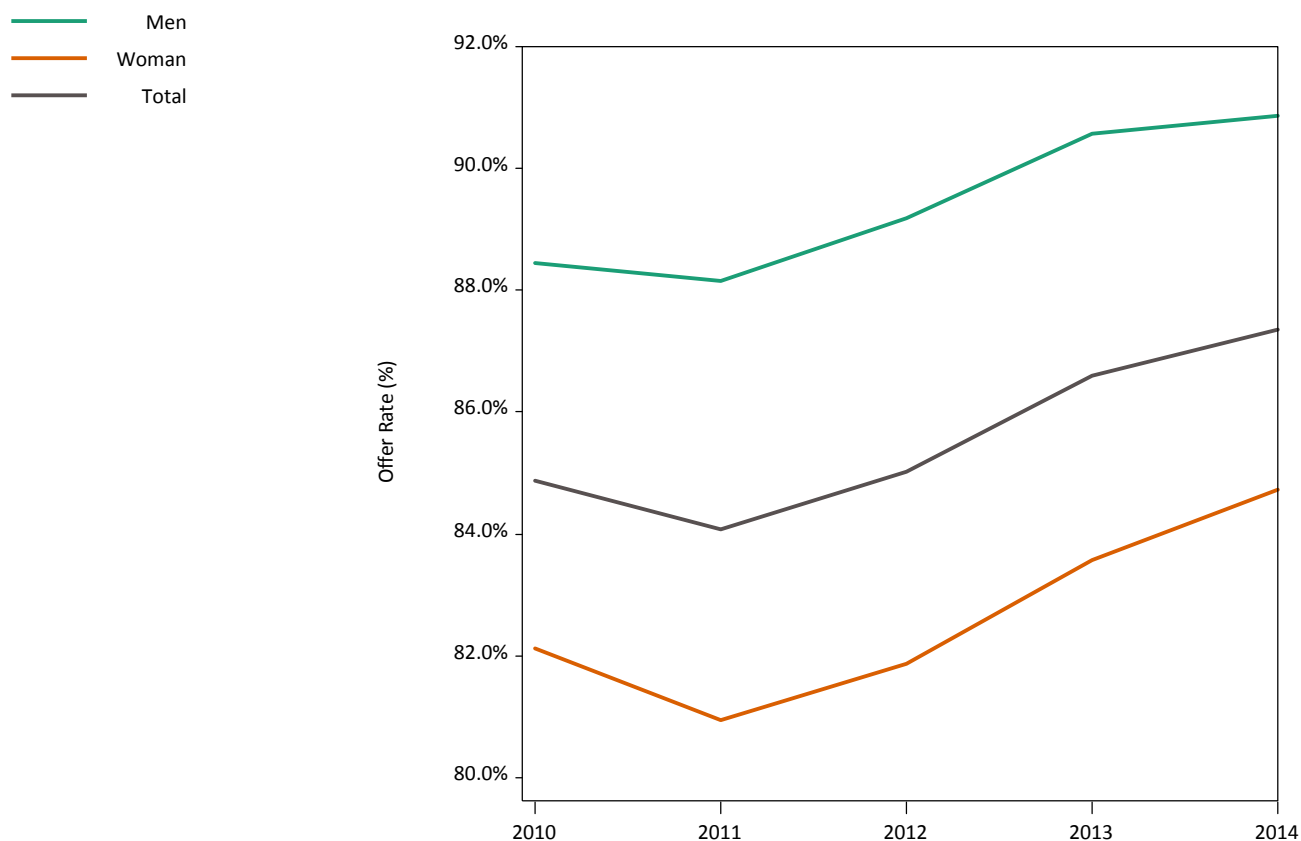
Table shows acceptance rates split by sex.

Sex	2010	2011	2012	2013	2014
Men	71.7%	72.3%	73.1%	75.2%	75.1%
Woman	68.4%	68.7%	69.6%	71.6%	71.8%
Total	69.9%	70.3%	71.1%	73.2%	73.2%

7. Sex - Offers

7.1 - Offer Rates by Sex Graph

Graph shows offer rates split by sex.



7.2 - Sex Offers Data Table

Table shows numbers for applicants and offers split by sex.

Sex		2010	2011	2012	2013	2014
Men	Applicants	286,340	290,860	265,905	274,570	282,080
	Applicants Offered	253,260	256,415	237,120	248,660	256,280
Woman	Applicants	371,615	377,090	350,620	361,210	376,810
	Applicants Offered	305,205	305,220	287,015	301,895	319,225
Total	Applicants	657,955	667,950	616,520	635,780	658,895
	Applicants Offered	558,465	561,635	524,135	550,555	575,505

7.3 - Sex Offer Rates Table

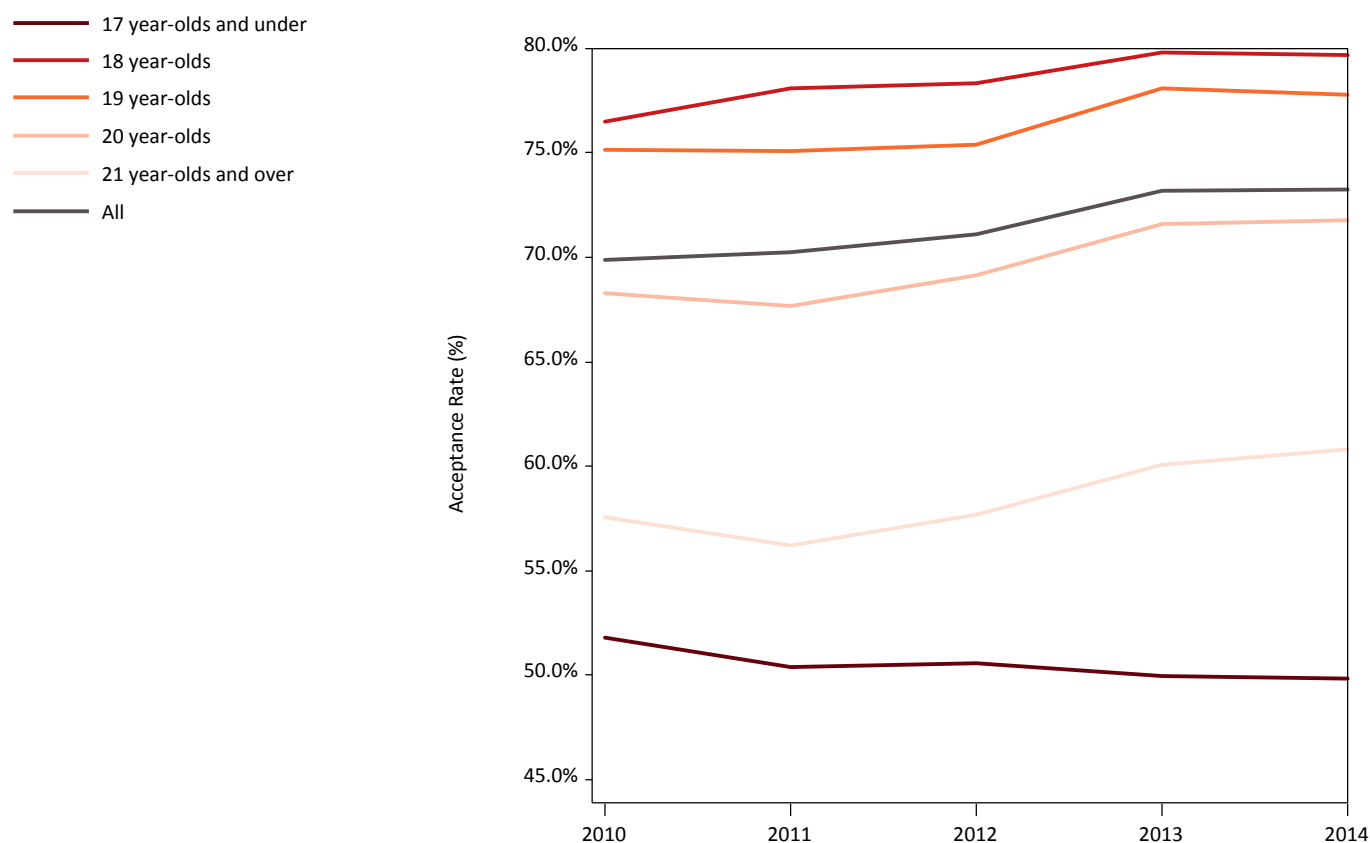
Table shows offer rates split by sex.

Sex	2010	2011	2012	2013	2014
Men	88.4%	88.2%	89.2%	90.6%	90.9%
Woman	82.1%	80.9%	81.9%	83.6%	84.7%
Total	84.9%	84.1%	85.0%	86.6%	87.3%

8. Age Group - Acceptances

8.1 - Acceptance Rates by Age Group Graph

Graph shows acceptance rates split by age group.



8.2 - Age Group Acceptance Data Table

Table shows numbers for applicants and acceptances split by age group.

Age Group		2010	2011	2012	2013	2014
17 year-olds and under	Applicants	9,500	9,490	9,920	10,710	11,610
	Applicants Accepted	4,920	4,780	5,015	5,350	5,785
18 year-olds	Applicants	299,315	300,205	293,235	298,840	307,330
	Applicants Accepted	228,945	234,500	229,665	238,440	244,975
19 year-olds	Applicants	133,285	139,975	122,555	134,670	138,250
	Applicants Accepted	100,200	105,080	92,415	105,170	107,500
20 year-olds	Applicants	59,670	60,165	55,120	57,205	60,325
	Applicants Accepted	40,740	40,720	38,095	40,960	43,315
21 year-olds and over	Applicants	195,585	190,325	172,805	175,950	182,170
	Applicants Accepted	112,520	106,950	99,720	105,680	110,800
All	Applicants	697,350	700,160	653,635	677,375	699,685
	Applicants Accepted	487,330	492,030	464,910	495,595	512,370

8.3 - Age Group Acceptance Rates Table

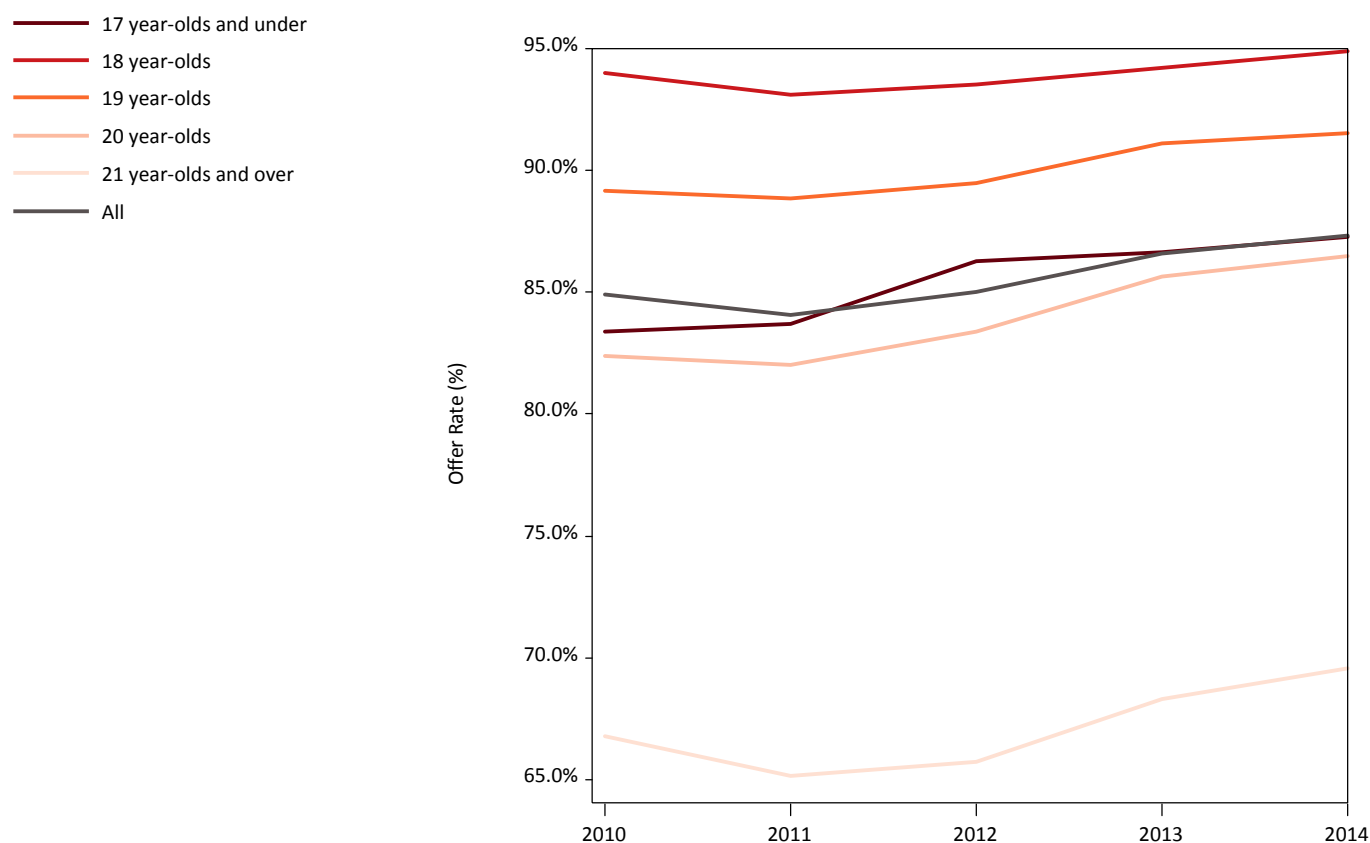
Table shows acceptance rates split by age group.

Age Group	2010	2011	2012	2013	2014
17 year-olds and under	51.8%	50.4%	50.6%	50.0%	49.8%
18 year-olds	76.5%	78.1%	78.3%	79.8%	79.7%
19 year-olds	75.2%	75.1%	75.4%	78.1%	77.8%
20 year-olds	68.3%	67.7%	69.1%	71.6%	71.8%
21 year-olds and over	57.5%	56.2%	57.7%	60.1%	60.8%
All	69.9%	70.3%	71.1%	73.2%	73.2%

9. Age Group - Offers

9.1 - Offer Rates by Age Group Graph

Graph shows offer rates split by age group.



9.2 - Age Group Offers Data Table

Table shows numbers for applicants and offers split by age group.

Age Group		2010	2011	2012	2013	2014
17 year-olds and under	Applicants	8,955	9,095	9,370	10,085	11,140
	Applicants Offered	7,465	7,610	8,090	8,735	9,720
18 year-olds	Applicants	296,270	297,575	289,290	294,345	303,665
	Applicants Offered	278,470	277,080	270,560	277,360	288,150
19 year-olds	Applicants	127,970	135,770	117,050	128,180	132,065
	Applicants Offered	114,090	120,650	104,710	116,745	120,900
20 year-olds	Applicants	53,695	55,715	49,920	51,350	54,480
	Applicants Offered	44,250	45,705	41,620	43,980	47,120
21 year-olds and over	Applicants	171,065	169,800	150,890	151,820	157,540
	Applicants Offered	114,200	110,585	99,160	103,735	109,610
All	Applicants	657,955	667,950	616,520	635,780	658,895
	Applicants Offered	558,465	561,635	524,135	550,555	575,505

9.3 - Age Group Offer Rates Table

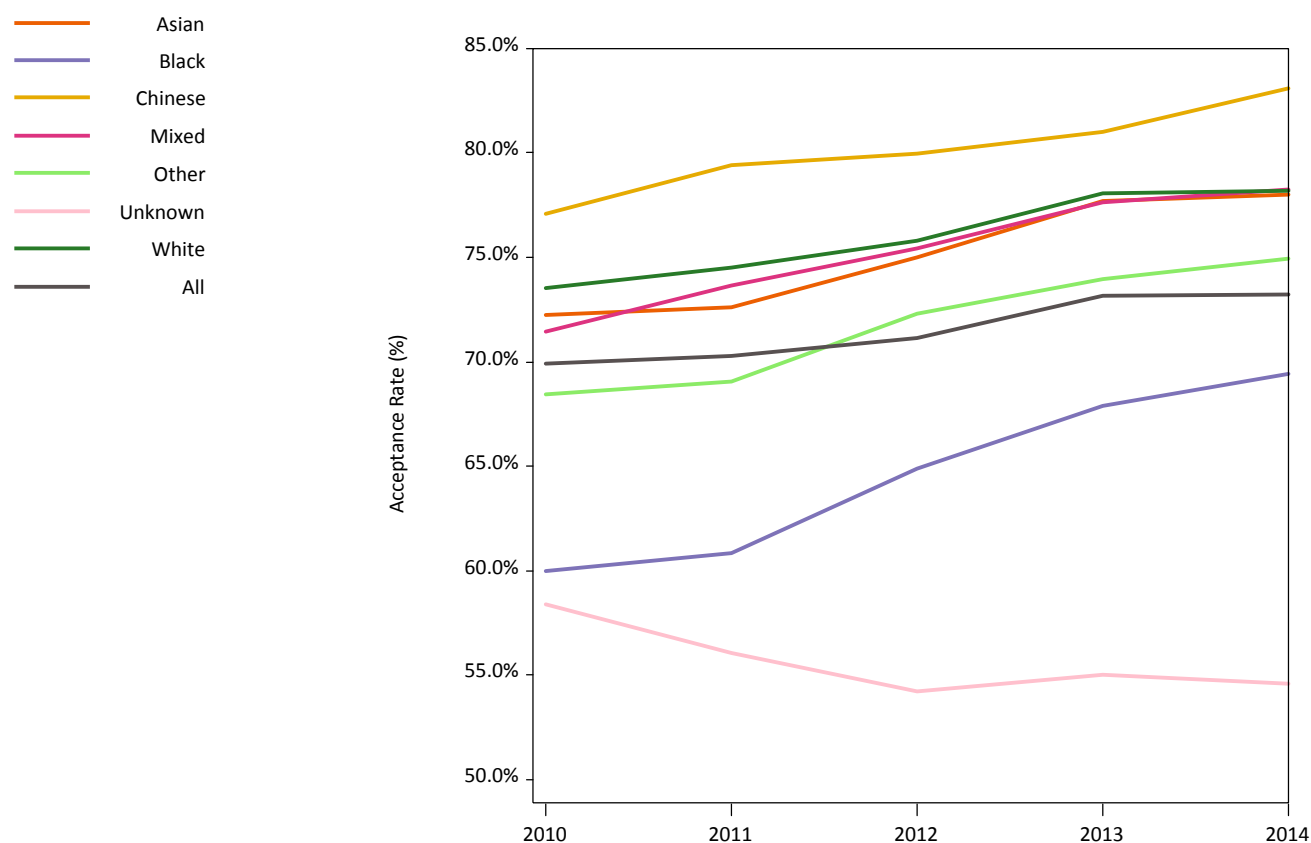
Table shows offer rates split by age group.

Age Group	2010	2011	2012	2013	2014
17 year-olds and under	83.4%	83.7%	86.3%	86.6%	87.3%
18 year-olds	94.0%	93.1%	93.5%	94.2%	94.9%
19 year-olds	89.2%	88.9%	89.5%	91.1%	91.5%
20 year-olds	82.4%	82.0%	83.4%	85.6%	86.5%
21 year-olds and over	66.8%	65.1%	65.7%	68.3%	69.6%
All	84.9%	84.1%	85.0%	86.6%	87.3%

10. Ethnic Group - Acceptances

10.1 - Acceptance Rates by Ethnic Group Graph

Graph shows acceptance rates split by ethnic group.



10.2 - Ethnic Group Acceptance Rates Table

Table shows acceptance rates split by ethnic group.

Ethnic	2010	2011	2012	2013	2014
Asian	72.2%	72.6%	75.0%	77.7%	78.0%
Black	60.0%	60.9%	64.9%	67.9%	69.4%
Chinese	77.1%	79.4%	80.0%	81.0%	83.1%
Mixed	71.4%	73.7%	75.4%	77.6%	78.2%
Other	68.4%	69.1%	72.3%	73.9%	74.9%
Unknown	58.4%	56.1%	54.2%	55.0%	54.6%
White	73.5%	74.5%	75.8%	78.1%	78.2%
All	69.9%	70.3%	71.1%	73.2%	73.2%

10.3 - Ethnic Group Acceptances Data Table

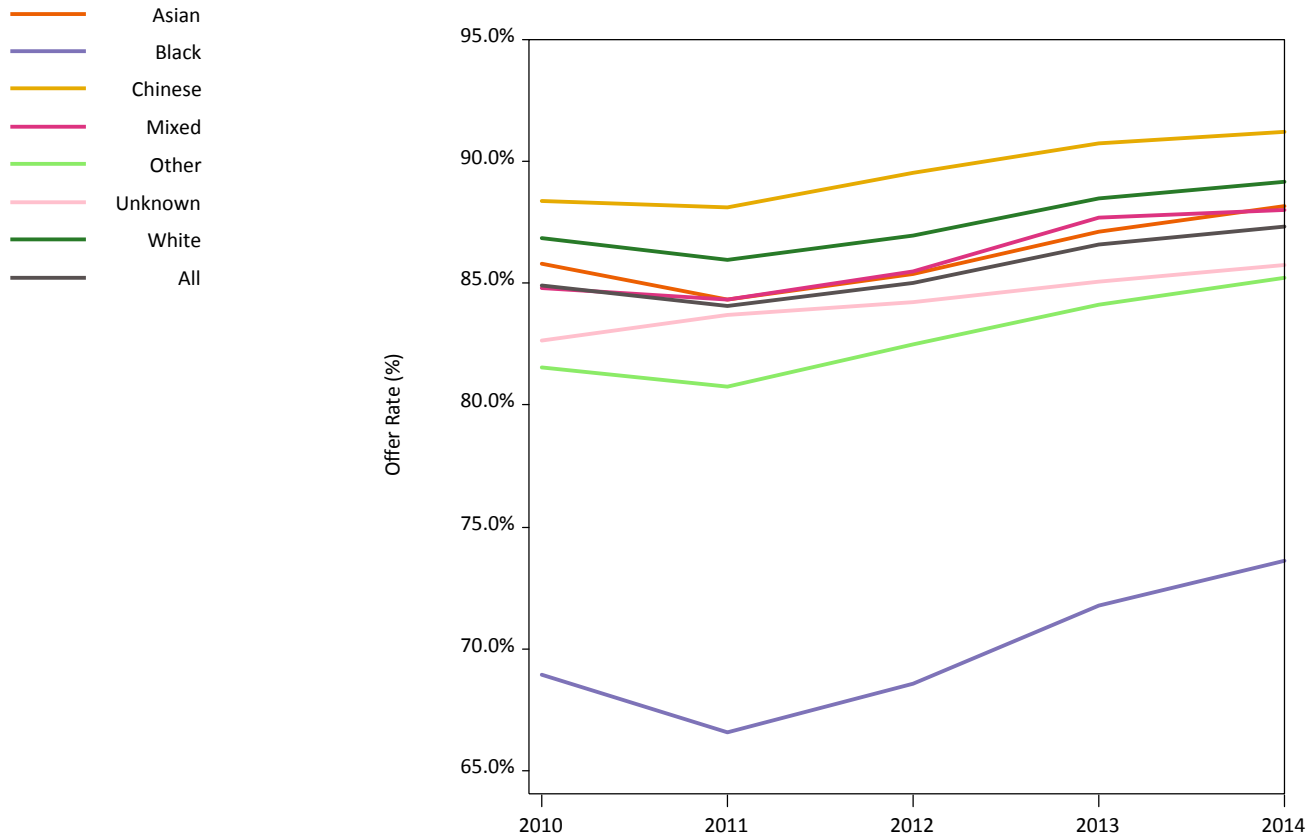
Table shows numbers for applicants and acceptances split by ethnic group.

Ethnic		2010	2011	2012	2013	2014
Asian	Applicants	51,580	54,540	52,305	54,525	57,530
	Applicants Accepted	37,265	39,605	39,235	42,365	44,865
Black	Applicants	45,280	48,780	47,475	47,855	51,860
	Applicants Accepted	27,160	29,690	30,795	32,485	36,000
Chinese	Applicants	4,500	4,540	4,165	4,075	4,280
	Applicants Accepted	3,470	3,605	3,330	3,300	3,555
Mixed	Applicants	19,860	21,030	19,660	20,945	22,655
	Applicants Accepted	14,185	15,495	14,820	16,255	17,725
Other	Applicants	6,460	6,820	8,160	8,385	9,330
	Applicants Accepted	4,420	4,710	5,900	6,200	6,990
Unknown	Applicants	118,690	117,245	114,890	120,675	126,530
	Applicants Accepted	69,330	65,730	62,285	66,365	69,080
White	Applicants	450,980	447,205	406,985	420,915	427,505
	Applicants Accepted	331,495	333,200	308,545	328,625	334,160
All	Applicants	697,350	700,160	653,635	677,375	699,685
	Applicants Accepted	487,330	492,030	464,910	495,595	512,370

11. Ethnic Group - Offers

11.1 - Offer Rates by Ethnic Group Graph

Graph shows offer rates split by ethnic group.



11.2 - Ethnic Group Offer Rates Table

Table shows offer rates split by ethnic group.

Ethnic	2010	2011	2012	2013	2014
Asian	85.8%	84.3%	85.4%	87.1%	88.1%
Black	68.9%	66.6%	68.5%	71.8%	73.6%
Chinese	88.4%	88.1%	89.5%	90.7%	91.2%
Mixed	84.8%	84.4%	85.5%	87.7%	88.0%
Other	81.6%	80.7%	82.5%	84.1%	85.2%
Unknown	82.6%	83.7%	84.2%	85.1%	85.7%
White	86.8%	85.9%	87.0%	88.5%	89.1%
All	84.9%	84.1%	85.0%	86.6%	87.3%

11.3 - Ethnic Group Offers Data Table

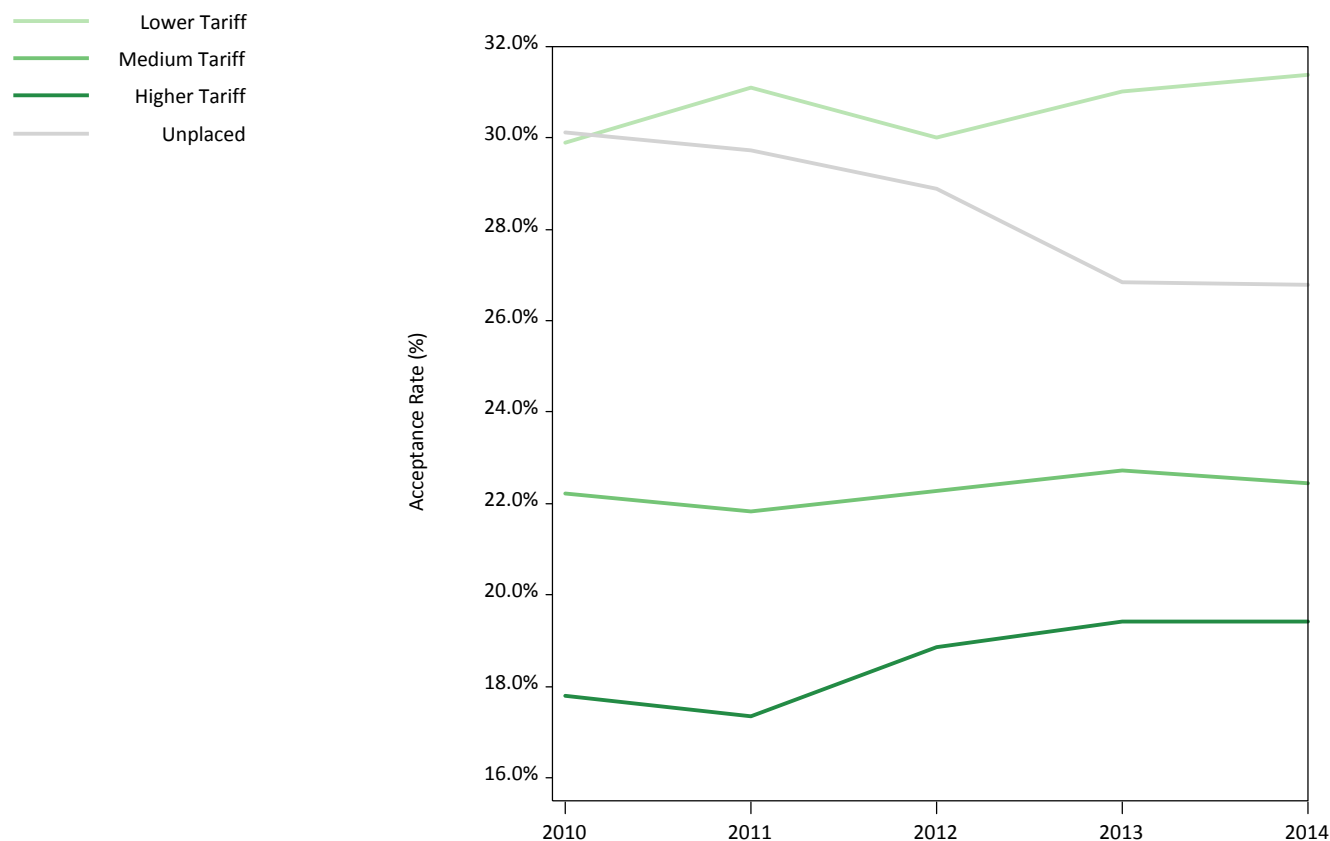
Table shows numbers for applicants and offers split by ethnic group

Ethnic		2010	2011	2012	2013	2014
Asian	Applicants	48,705	51,775	49,020	50,860	53,635
	Applicants Offered	41,785	43,650	41,840	44,305	47,275
Black	Applicants	41,660	44,510	42,250	42,175	44,300
	Applicants Offered	28,715	29,630	28,960	30,270	32,615
Chinese	Applicants	4,350	4,415	4,010	3,930	4,145
	Applicants Offered	3,850	3,890	3,590	3,565	3,780
Mixed	Applicants	18,990	20,130	18,465	19,500	21,150
	Applicants Offered	16,105	16,980	15,780	17,095	18,615
Other	Applicants	5,965	6,310	7,330	7,425	8,215
	Applicants Offered	4,865	5,095	6,050	6,245	7,000
Unknown	Applicants	101,580	106,755	104,785	110,380	116,600
	Applicants Offered	83,935	89,350	88,240	93,885	99,965
White	Applicants	436,705	434,055	390,665	401,515	410,855
	Applicants Offered	379,210	373,040	339,685	355,190	366,255
All	Applicants	657,955	667,950	616,520	635,780	658,895
	Applicants Offered	558,465	561,635	524,135	550,555	575,505

12. University and College Tariff Group - Acceptances

12.1 - Acceptance Rates by University and College Tariff Group Graph

Graph shows applicant acceptance rates split by the tariff group of the accepting provider.



12.2 - University and College Tariff Group Data Table

Table shows numbers for acceptances split by the tariff group of the accepting provider.

Tariff Group	2010	2011	2012	2013	2014
Lower Tariff	208,395	217,780	196,060	210,000	219,520
Medium Tariff	154,960	152,865	145,565	153,985	157,005
Higher Tariff	123,970	121,380	123,285	131,610	135,840
Unplaced	210,020	208,130	188,725	181,775	187,315
Total	697,350	700,160	653,635	677,375	699,685

12.3 - University and College Tariff Group Distributions Table

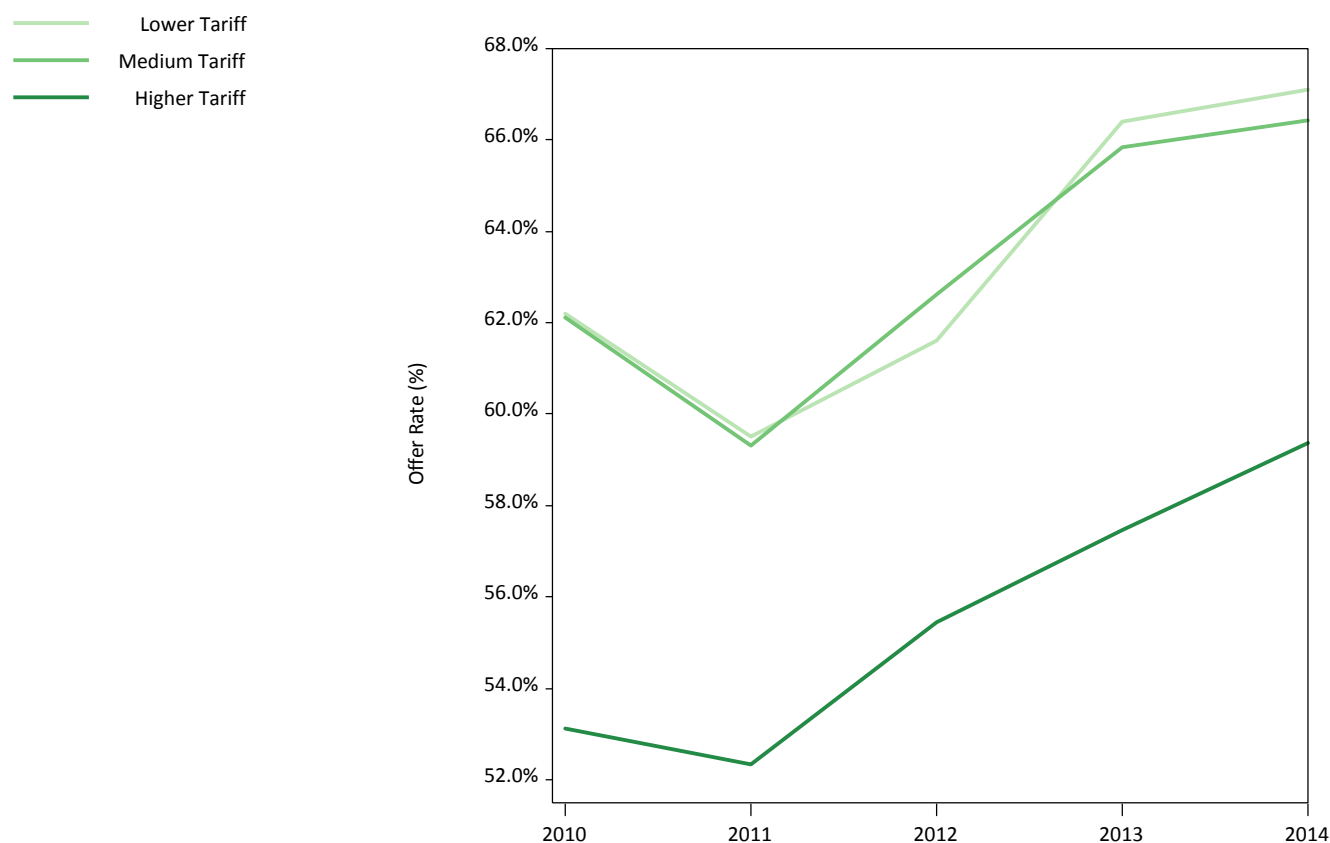
Table shows acceptance rates split by the tariff group of the accepting provider.

Tariff Group	2010	2011	2012	2013	2014
Lower Tariff	29.9%	31.1%	30.0%	31.0%	31.4%
Medium Tariff	22.2%	21.8%	22.3%	22.7%	22.4%
Higher Tariff	17.8%	17.3%	18.9%	19.4%	19.4%
Unplaced	30.1%	29.7%	28.9%	26.8%	26.8%

13. University and College Tariff Group - Offers

13.1 - Offer Rates by University and College Tariff Group Graph

Graph shows applicant offer rates split by the tariff group of the provider applied to.



13.2 - University and College Tariff Group Data Table

Table shows numbers for offers split by the tariff group of the provider applied to.

Tariff Group		2010	2011	2012	2013	2014
Lower Tariff	Applications to	972,730	1,062,435	961,380	961,500	995,620
	Received Offers	605,095	632,260	592,230	638,440	667,945
Medium Tariff	Applications to	845,265	890,285	809,560	841,680	881,590
	Received Offers	525,095	527,960	506,885	554,100	585,580
Higher Tariff	Applications to	902,500	894,290	865,310	908,690	947,330
	Received Offers	479,295	468,120	479,840	522,050	562,425

13.3 - University and College Tariff Group Distributions Table

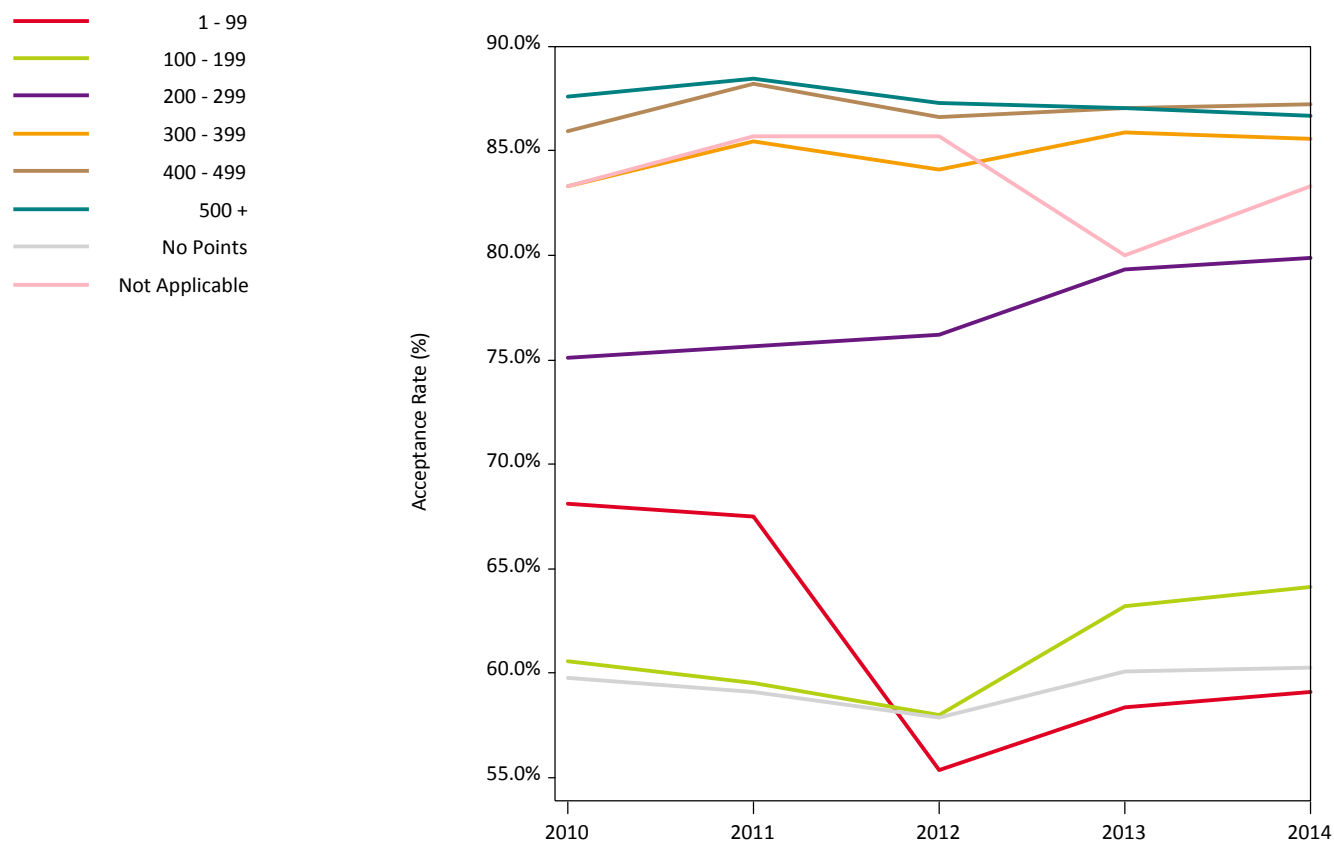
Table shows offer rates split by the tariff group of the provider applied to.

Tariff Group	2010	2011	2012	2013	2014
Lower Tariff	62.2%	59.5%	61.6%	66.4%	67.1%
Medium Tariff	62.1%	59.3%	62.6%	65.8%	66.4%
Higher Tariff	53.1%	52.3%	55.5%	57.5%	59.4%

14. Applicant Tariff Band - Acceptances

14.1 - Applicant Tariff Band Acceptance Rates Graph

Graph shows acceptance rates split by applicant tariff band.



14.2 - Tariff Band Acceptance Rates Table

Table shows acceptance rates split by applicant tariff band.

Tariff Band	2010	2011	2012	2013	2014
1 - 99	68.1%	67.5%	55.4%	58.3%	59.1%
100 - 199	60.6%	59.5%	58.0%	63.2%	64.1%
200 - 299	75.1%	75.6%	76.2%	79.3%	79.9%
300 - 399	83.3%	85.5%	84.1%	85.9%	85.6%
400 - 499	86.0%	88.2%	86.6%	87.0%	87.2%
500 +	87.6%	88.5%	87.3%	87.0%	86.7%
No Points	59.8%	59.1%	57.9%	60.1%	60.3%
Not Applicable	83.3%	85.7%	85.7%	80.0%	83.3%

14.3 - Tariff Band Data Table

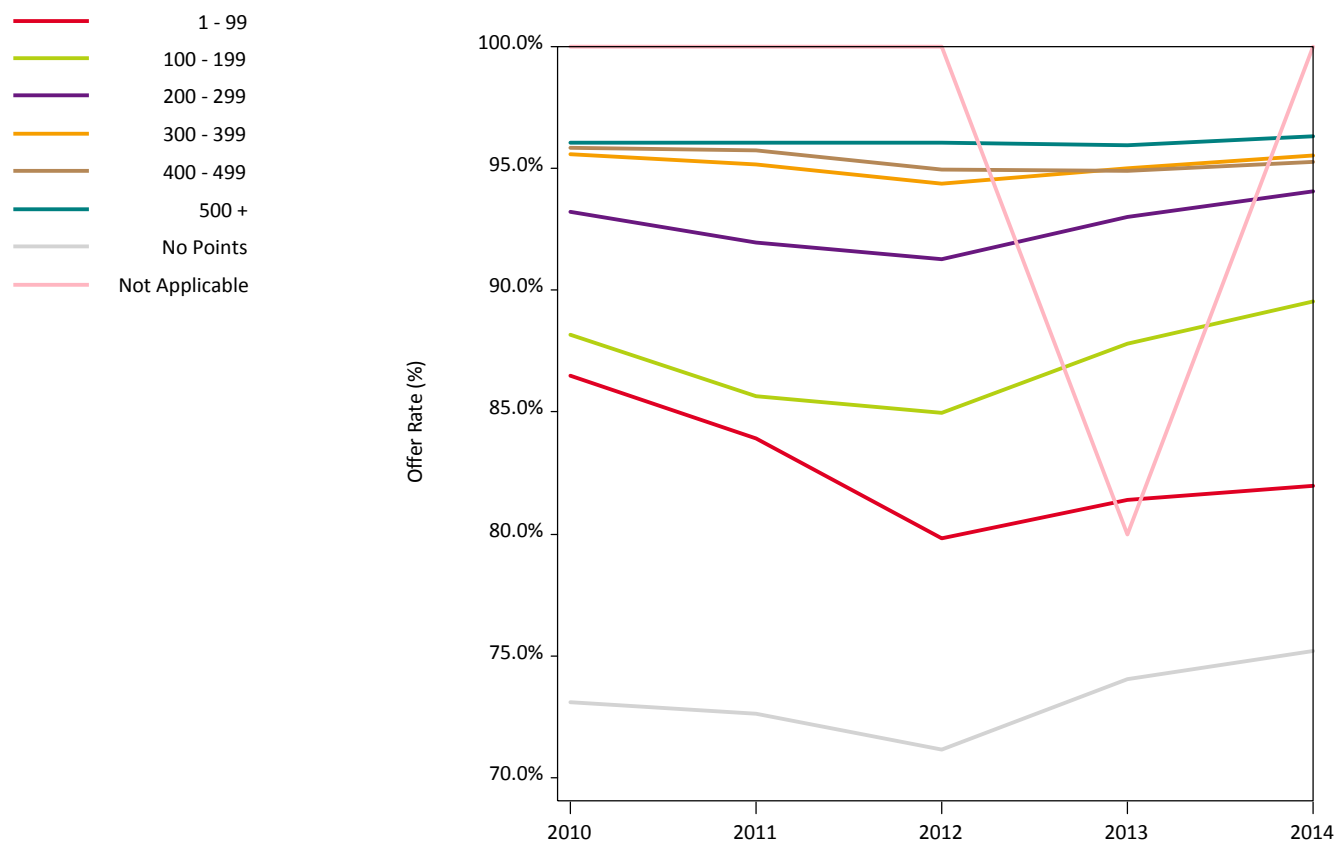
Table shows numbers for applicant tariff bands and acceptances.

Tariff Group		2010	2011	2012	2013	2014
1 - 99	Applicants	36,150	32,330	14,235	12,745	13,170
	Applicants Accepted	24,630	21,815	7,885	7,435	7,780
100 - 199	Applicants	44,240	44,195	38,300	37,390	38,155
	Applicants Accepted	26,805	26,315	22,215	23,635	24,460
200 - 299	Applicants	91,620	92,050	99,765	104,700	108,050
	Applicants Accepted	68,825	69,610	76,015	83,060	86,325
300 - 399	Applicants	100,210	102,200	118,925	125,680	128,200
	Applicants Accepted	83,460	87,330	100,020	107,935	109,705
400 - 499	Applicants	64,950	66,215	78,825	81,650	84,900
	Applicants Accepted	55,840	58,410	68,290	71,060	74,050
500 +	Applicants	45,065	47,670	50,170	48,785	48,565
	Applicants Accepted	39,465	42,170	43,795	42,465	42,105
No Points	Applicants	315,085	315,460	253,380	266,405	278,610
	Applicants Accepted	188,275	186,345	146,665	159,990	167,920
Not Applicable	Applicants	30	35	35	25	30
	Applicants Accepted	25	30	30	20	20

15. Applicant Tariff Band - Offers

15.1 - Applicant Tariff Band Offer Rates Graph

Graph shows offer rates split by applicant tariff band.



15.2 - Tariff Band Offer Rates Table

Table shows offer rates split by applicant tariff band.

Tariff Band	2010	2011	2012	2013	2014
1 - 99	86.5%	83.9%	79.8%	81.4%	82.0%
100 - 199	88.2%	85.7%	85.0%	87.8%	89.5%
200 - 299	93.2%	91.9%	91.3%	93.0%	94.1%
300 - 399	95.6%	95.1%	94.4%	95.0%	95.5%
400 - 499	95.8%	95.7%	95.0%	94.9%	95.3%
500 +	96.1%	96.1%	96.1%	96.0%	96.3%
No Points	73.1%	72.6%	71.2%	74.0%	75.2%
Not Applicable	100.0%	100.0%	100.0%	80.0%	100.0%

15.3 - Tariff Band Data Table

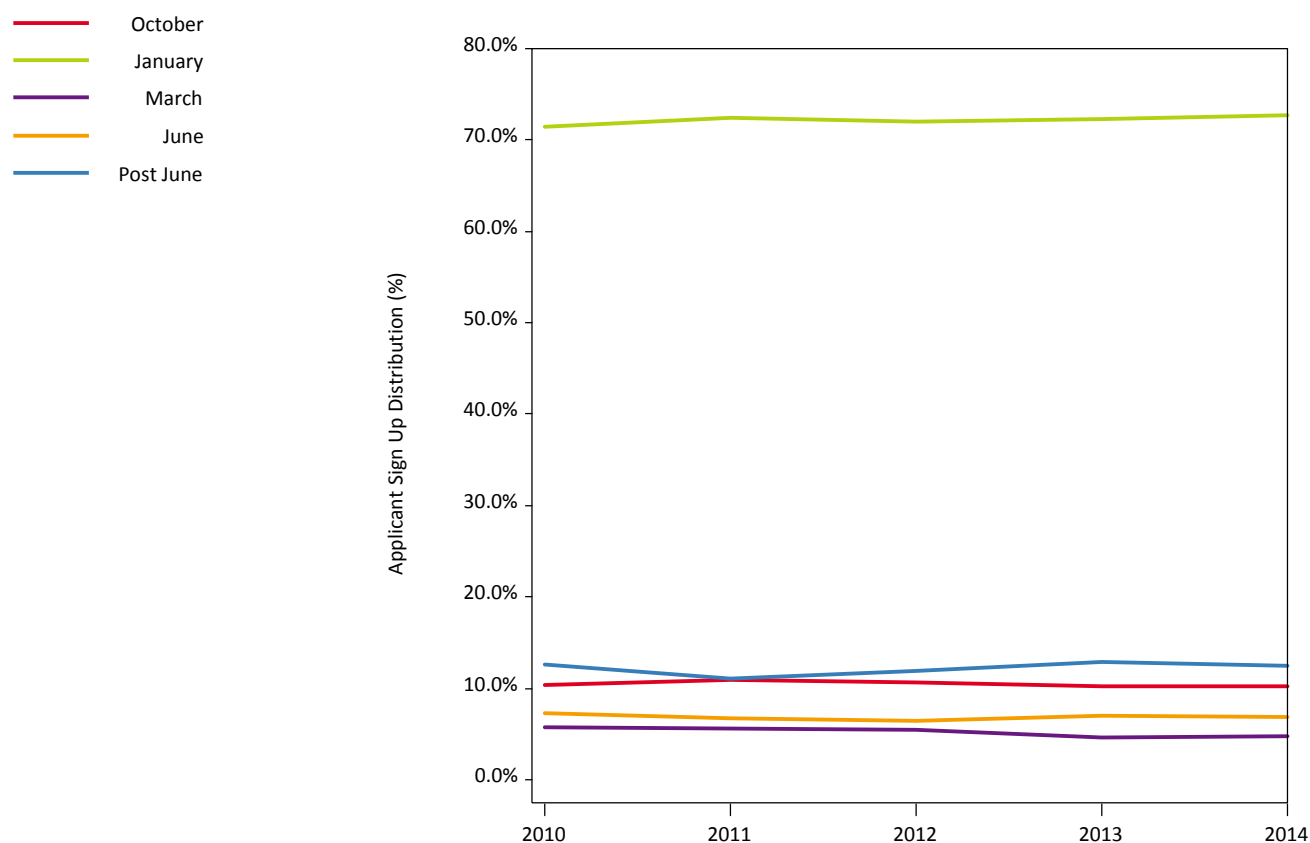
Table shows numbers for applicant tariff bands and offers.

Tariff Group		2010	2011	2012	2013	2014
1 - 99	Applicants	35,910	32,090	13,975	12,505	13,005
	Applicants Offered	31,050	26,925	11,160	10,180	10,655
100 - 199	Applicants	44,075	44,015	38,140	37,165	38,000
	Applicants Offered	38,865	37,700	32,410	32,630	34,015
200 - 299	Applicants	91,455	91,855	99,610	104,500	107,900
	Applicants Offered	85,260	84,455	90,940	97,165	101,480
300 - 399	Applicants	100,100	102,075	118,800	125,560	128,105
	Applicants Offered	95,675	97,120	112,140	119,305	122,370
400 - 499	Applicants	64,895	66,160	78,770	81,590	84,855
	Applicants Offered	62,195	63,330	74,800	77,405	80,855
500 +	Applicants	45,030	47,650	50,140	48,750	48,540
	Applicants Offered	43,255	45,780	48,165	46,780	46,750
No Points	Applicants	276,460	284,070	217,055	225,685	238,460
	Applicants Offered	202,135	206,290	154,490	167,070	179,345
Not Applicable	Applicants	30	35	35	25	30
	Applicants Offered	30	35	35	20	25

16. Applicant Sign Up Deadlines

16.1 - Sign Up Rates between Deadlines Graph

Graph shows the percentage of applicants that signed up between the UCAS deadlines.



16.2 - Sign Ups between Deadlines Data Table

Table shows the numbers of applicants that signed up between the UCAS deadlines.

Deadline	2010	2011	2012	2013	2014
October	71,775	76,525	69,670	69,175	71,305
January	498,205	506,785	470,140	489,500	508,465
March	39,870	39,240	35,785	31,140	33,100
June	50,485	47,200	42,460	47,510	48,035
Post June	37,015	30,410	35,585	40,050	38,780
Total	697,350	700,160	653,635	677,375	699,685

16.3 - Sign Up Rates between Deadlines Table

Table shows the percentage of applicants that signed up between the UCAS deadlines.

Deadline	2010	2011	2012	2013	2014
October	10.3%	10.9%	10.7%	10.2%	10.2%
January	71.4%	72.4%	71.9%	72.3%	72.7%
March	5.7%	5.6%	5.5%	4.6%	4.7%
June	7.2%	6.7%	6.5%	7.0%	6.9%
Post June	12.5%	11.1%	11.9%	12.9%	12.4%

17. Applicant Tariff Band - Detailed

17.1 - Detailed Tariff Band Data Table - Applicants & Acceptances

Table shows numbers of applicants and acceptances in each tariff band.

Tariff Group		2010	2011	2012	2013	2014
1 - 39	Applicants	20,120	15,975	4,550	3,370	3,620
	Applicants Accepted	14,670	11,560	2,680	2,075	2,230
40 - 79	Applicants	10,545	10,810	5,890	5,385	5,510
	Applicants Accepted	6,730	6,895	3,245	3,040	3,150
80 - 119	Applicants	11,610	11,780	7,590	7,625	7,775
	Applicants Accepted	6,810	6,990	3,915	4,435	4,610
120 - 159	Applicants	15,535	15,695	13,825	13,285	13,580
	Applicants Accepted	9,120	9,030	7,490	7,785	8,185
160 - 199	Applicants	22,575	22,270	20,685	20,470	20,845
	Applicants Accepted	14,110	13,655	12,765	13,735	14,065
200 - 239	Applicants	31,040	31,065	30,645	31,245	32,010
	Applicants Accepted	21,705	21,435	21,570	23,300	24,065
240 - 279	Applicants	39,445	39,655	42,175	44,705	45,800
	Applicants Accepted	30,260	30,745	32,620	35,825	36,995
280 - 319	Applicants	42,825	43,370	48,885	52,430	54,345
	Applicants Accepted	34,500	35,775	39,850	43,940	45,475
320 - 359	Applicants	41,355	41,630	48,350	51,405	52,270
	Applicants Accepted	34,330	35,515	40,555	44,100	44,685
360 - 399	Applicants	37,160	38,525	48,635	50,595	51,830
	Applicants Accepted	31,490	33,470	41,440	43,830	44,810
400 - 439	Applicants	30,920	31,550	42,880	45,565	48,915
	Applicants Accepted	26,570	27,675	36,990	39,590	42,550
440 - 479	Applicants	24,230	24,750	25,860	26,095	26,235
	Applicants Accepted	20,805	21,880	22,520	22,710	22,930
480 - 519	Applicants	17,805	18,430	19,130	18,905	18,690
	Applicants Accepted	15,385	16,340	16,675	16,465	16,290
520 - 559	Applicants	13,330	14,170	14,870	14,500	14,535
	Applicants Accepted	11,615	12,485	12,905	12,555	12,555
560 - 599	Applicants	9,090	9,750	10,140	10,100	10,310
	Applicants Accepted	7,960	8,560	8,845	8,800	8,915
600 - 639	Applicants	6,255	6,635	7,120	6,970	6,720
	Applicants Accepted	5,485	5,900	6,235	6,115	5,905
640 - 679	Applicants	3,655	3,900	4,155	3,980	3,865
	Applicants Accepted	3,235	3,475	3,635	3,455	3,355
680 - 719	Applicants	2,245	2,310	2,415	2,225	2,195
	Applicants Accepted	2,015	2,100	2,135	1,980	1,910
720 - 759	Applicants	1,225	1,165	1,220	1,140	1,065
	Applicants Accepted	1,095	1,055	1,085	1,010	925
760 - 799	Applicants	550	555	545	465	445
	Applicants Accepted	500	505	485	410	400
800 +	Applicants	710	665	660	490	490
	Applicants Accepted	645	605	575	440	415

17.2 - Detailed Tariff Band Data Table - Applicants & Offers

Table shows numbers of applicants and acceptances in each tariff band.

Tariff Group		2010	2011	2012	2013	2014
1 - 39	Applicants	19,975	15,835	4,410	3,260	3,535
	Applicants Offered	17,395	13,390	3,395	2,550	2,750
40 - 79	Applicants	10,490	10,740	5,805	5,295	5,455
	Applicants Offered	8,995	8,960	4,705	4,320	4,480
80 - 119	Applicants	11,540	11,715	7,520	7,545	7,715
	Applicants Offered	9,875	9,730	6,145	6,375	6,640
120 - 159	Applicants	15,470	15,630	13,760	13,195	13,515
	Applicants Offered	13,535	13,230	11,435	11,320	11,925
160 - 199	Applicants	22,510	22,185	20,620	20,375	20,785
	Applicants Offered	20,120	19,315	17,885	18,245	18,875
200 - 239	Applicants	30,970	30,980	30,590	31,165	31,945
	Applicants Offered	28,415	27,960	27,355	28,610	29,725
240 - 279	Applicants	39,375	39,585	42,095	44,615	45,735
	Applicants Offered	36,825	36,580	38,655	41,615	43,115
280 - 319	Applicants	42,775	43,305	48,830	52,375	54,300
	Applicants Offered	40,590	40,645	45,570	49,450	51,595
320 - 359	Applicants	41,315	41,580	48,300	51,365	52,240
	Applicants Offered	39,520	39,625	45,635	48,880	49,985
360 - 399	Applicants	37,115	38,480	48,595	50,540	51,785
	Applicants Offered	35,580	36,765	45,865	47,915	49,430
400 - 439	Applicants	30,885	31,520	42,850	45,535	48,890
	Applicants Offered	29,690	30,155	40,445	43,020	46,365
440 - 479	Applicants	24,215	24,735	25,840	26,080	26,220
	Applicants Offered	23,155	23,675	24,710	24,880	25,145
480 - 519	Applicants	17,790	18,420	19,115	18,890	18,685
	Applicants Offered	16,975	17,655	18,305	18,010	17,895
520 - 559	Applicants	13,320	14,165	14,865	14,490	14,525
	Applicants Offered	12,805	13,585	14,235	13,850	13,960
560 - 599	Applicants	9,085	9,745	10,135	10,090	10,305
	Applicants Offered	8,730	9,325	9,710	9,670	9,900
600 - 639	Applicants	6,250	6,635	7,115	6,965	6,720
	Applicants Offered	5,995	6,385	6,850	6,700	6,515
640 - 679	Applicants	3,650	3,900	4,155	3,980	3,865
	Applicants Offered	3,515	3,760	4,015	3,845	3,740
680 - 719	Applicants	2,245	2,310	2,410	2,225	2,190
	Applicants Offered	2,180	2,255	2,335	2,175	2,130
720 - 759	Applicants	1,225	1,165	1,220	1,140	1,065
	Applicants Offered	1,185	1,130	1,185	1,105	1,035
760 - 799	Applicants	550	555	545	465	445
	Applicants Offered	535	540	535	450	435
800 +	Applicants	710	665	660	485	490
	Applicants Offered	685	650	640	475	475

18. Course Group - Acceptances

18.1 - Acceptance Data by Course Group Table

Table shows numbers for acceptances split by course group.

Course Groups	2010	2011	2012	2013	2014
Group A Medicine and Dentistry	9,245	9,065	9,080	8,765	8,915
Group B Subjects Allied to Medicine	49,890	47,960	46,615	49,475	52,405
Group C Biological Sciences	38,825	40,140	39,625	44,415	48,815
Group D Veterinary Sciences, Agriculture and related subjects	5,780	6,115	5,780	6,445	6,740
Group F Physical Sciences	18,000	18,440	18,270	19,325	19,920
Group G Mathematical Sciences	7,930	8,360	8,100	8,475	8,470
Group H Engineering	26,065	25,995	25,295	27,155	29,110
Group I Computer Sciences	20,500	20,420	19,355	21,710	23,585
Group J Technologies	3,235	2,815	2,345	2,560	2,585
Group K Architecture, Building and Planning	9,415	8,955	7,550	7,730	7,685
Group L Social studies	38,640	39,925	37,830	40,930	43,325
Group M Law	21,850	22,720	22,080	23,740	23,695
Group N Business and Administrative studies	59,250	61,100	57,595	60,990	63,660
Group P Mass Communication and Documentation	11,215	11,790	10,595	11,845	12,715
Group Q Linguistics, Classics and related subjects	12,660	12,635	12,030	12,460	12,525
Group R European Languages, Literature and related subjects	4,680	4,570	4,065	4,005	3,780
Group T Eastern, Asiatic, African, American and Australasian Languages, Literature and related subjects	1,485	1,440	1,235	1,255	1,115
Group V Historical and Philosophical studies	14,975	15,060	14,160	14,930	15,285
Group W Creative Arts and Design	51,560	53,065	47,735	51,645	53,330
Group X Education	16,335	16,960	16,895	17,860	18,440
Y Combined arts	13,270	12,845	11,155	10,925	10,580
Y Combined sciences	8,575	8,860	8,175	8,380	8,295
Y Combined social sciences	5,800	5,580	5,100	5,180	5,205
Y Sciences combined with social sciences or arts	21,250	20,420	17,530	17,410	15,190
Y Social sciences combined with arts	12,345	12,195	10,625	11,040	10,140
Z General, other combined & unknown	4,555	4,595	6,090	6,955	6,860

19. Top Universities and Colleges - Acceptances, Offers and Applications

19.1 - Top Universities and Colleges Acceptances Table

Table shows the top universities and colleges for applicants in 2014 for acceptances.

Top Universities & Colleges - 2014		2010	2011	2012	2013	2014
1	The University of Manchester	8,940	8,115	7,860	8,605	9,040
2	The Manchester Metropolitan University	9,835	9,085	7,640	9,080	8,825
3	Sheffield Hallam University	8,040	8,210	7,425	7,465	8,080
4	Nottingham Trent University	6,755	6,855	6,355	6,855	7,795
5	Leeds Beckett University	7,195	8,085	6,265	7,345	7,560
6	University of Leeds	7,460	6,845	6,430	6,810	6,985
7	The University of Nottingham	6,900	7,185	7,160	6,995	6,755
8	University of Central Lancashire (UCLan)	6,410	6,355	5,320	5,780	6,640
9	Liverpool John Moores University (LJMU)	6,025	6,285	5,475	6,315	6,620
10	Coventry University	6,255	5,105	5,430	5,885	6,465
11	Kingston University	7,525	6,810	6,210	6,005	6,410
12	University of the West of England, Bristol (UWE)	7,060	7,285	6,585	6,795	6,370
13	The University of Birmingham	5,480	5,520	5,135	5,890	6,325
14	Ulster University	5,610	5,360	5,675	6,000	6,265
15	Birmingham City University	5,100	5,215	5,310	6,095	6,215

19.2 - Top Universities and Colleges Offers Table

Table shows the top universities and colleges for applicants in 2014 for offers.

Top Universities & Colleges - 2014		2010	2011	2012	2013	2014
1	The Manchester Metropolitan University	33,165	33,810	28,015	37,345	40,390
2	The University of Manchester	34,630	33,845	31,235	34,405	38,275
3	University of Leeds	31,610	30,175	29,110	30,350	32,975
4	The University of Nottingham	30,190	30,240	31,780	31,880	31,225
5	University of Exeter	20,495	20,015	22,860	27,115	30,440
6	University of Portsmouth	23,815	24,205	24,555	26,500	30,175
7	The University of Birmingham	27,390	26,655	24,320	25,720	29,925
8	Nottingham Trent University	25,880	27,930	24,880	28,120	29,500
9	The University of Sheffield	25,105	22,685	23,195	26,970	28,650
10	Ulster University	25,005	22,330	24,025	24,445	26,045
11	Coventry University	16,835	16,290	18,335	22,285	25,750
12	Sheffield Hallam University	27,625	26,935	22,550	24,675	25,605
13	The University of Liverpool	20,630	22,655	19,145	23,905	25,310
14	University of Bristol	14,770	13,505	18,120	21,510	25,030
15	Newcastle University	20,755	19,445	20,165	24,065	24,800

19.3 - Top Universities and Colleges Applications Table

Table shows the top Universities and Colleges for applicants in 2014 for applications.

Top Universities & Colleges - 2014		2010	2011	2012	2013	2014
1	The University of Manchester	58,245	57,880	52,780	55,870	61,285
2	The Manchester Metropolitan University	54,300	58,730	49,355	51,940	57,880
3	The University of Edinburgh	50,955	44,815	46,910	50,750	55,060
4	University of Leeds	52,840	52,435	49,390	48,435	53,560
5	The University of Nottingham	48,905	52,125	52,285	51,140	48,260
6	The University of Birmingham	43,325	42,955	38,795	39,980	45,900
7	King's College London (University of London)	37,045	38,000	33,695	36,105	41,270
8	University of Bristol	39,435	39,300	36,485	39,680	40,425
9	Sheffield Hallam University	46,275	50,655	41,775	39,510	40,085
10	UCL (University College London)	36,045	35,970	35,110	36,015	38,330
11	Cardiff University	33,030	31,625	30,340	34,190	38,300
12	University of Exeter	29,965	26,190	26,195	33,825	37,280
13	Coventry University	26,750	27,855	28,205	33,100	37,140
14	The University of Sheffield	39,890	34,225	31,755	35,565	36,820
15	University of Southampton	38,335	37,090	34,415	36,705	36,600

20. Top Subject Lines - Acceptances, Offers and Applications

20.1 - Top Subject Line Acceptances Table

Table shows the top Subject Lines for applicants in 2014 for acceptances.

Top Subject lines - 2014		2010	2011	2012	2013	2014
1	B7 - Nursing	26,550	23,995	23,835	24,700	26,965
2	C8 - Psychology	16,110	16,685	16,175	18,110	19,785
3	M1 - Law by Area	16,975	17,945	18,025	19,150	19,340
4	W2 - Design studies	18,695	19,580	17,325	17,950	19,030
5	I1 - Computer Science	13,245	13,405	12,565	14,390	15,755
6	NN - Combinations within Business & Admin. Studies	10,820	12,105	12,265	14,380	14,520
7	C6 - Sport and Exercise Science	10,955	11,055	10,885	12,345	14,045
8	N1 - Business studies	12,305	13,130	11,865	12,375	13,720
9	L5 - Social Work	11,185	11,290	11,280	12,570	13,305
10	N2 - Management studies	12,530	12,665	11,970	11,805	11,760
11	B9 - Others in Subjects allied to Medicine	9,190	9,765	9,190	10,155	10,635
12	X3 - Academic studies in Education	7,995	8,815	8,535	9,990	10,225
13	V1 - History by Period	8,600	8,810	8,670	9,425	9,685
14	Q3 - English studies	10,020	10,020	9,480	9,685	9,550
15	N8 - Hospitality, leisure, sport, tourism & transport	9,665	9,170	8,220	8,595	9,185

20.2 - Top Subject Line Offers Table

Table shows the top Subject Lines for applicants in 2014 for Offers.

Top Subject Lines - 2014		2010	2011	2012	2013	2014
1	C8 - Psychology	70,515	69,465	69,610	79,665	86,670
2	M1 - Law by Area	64,095	66,715	68,745	74,805	75,655
3	NN - Combinations within Business & Admin. Studies	47,905	50,290	51,775	60,370	61,945
4	I1 - Computer Science	46,030	46,885	45,435	52,815	59,965
5	N2 - Management studies	49,300	52,290	51,445	51,850	53,815
6	C6 - Sport and Exercise Science	42,285	39,220	38,740	45,740	52,965
7	N1 - Business studies	45,500	47,945	44,390	48,015	50,890
8	W2 - Design studies	36,215	39,255	38,040	41,845	45,405
9	V1 - History by Period	36,380	36,815	38,235	42,435	44,665
10	B7 - Nursing	42,170	35,385	36,880	39,675	44,575
11	Q3 - English studies	38,690	38,390	38,555	39,865	40,645
12	L1 - Economics	29,970	32,370	33,445	36,070	37,675
13	H3 - Mechanical Engineering	27,185	29,145	30,645	33,720	37,200
14	G1 - Mathematics	30,795	32,440	31,870	34,465	35,020
15	B9 - Others in Subjects allied to Medicine	26,270	27,850	26,395	30,795	33,520

20.3 - Top Subject Line Applications Table

Table shows the top Subject Lines for applicants in 2014 for applications.

Top Subject Lines - 2014		2010	2011	2012	2013	2014
1	B7 - Nursing	184,615	206,180	212,375	224,365	237,990
2	C8 - Psychology	93,800	96,660	90,670	98,995	106,225
3	M1 - Law by Area	94,205	98,450	98,380	103,315	103,220
4	W2 - Design studies	102,320	108,225	91,115	91,145	97,025
5	A1 - Pre-clinical Medicine	80,060	83,185	81,260	82,440	84,850
6	NN - Combinations within Business & Admin. Studies	68,240	72,445	72,915	79,035	79,795
7	I1 - Computer Science	59,820	64,910	60,225	68,060	76,895
8	N2 - Management studies	70,500	76,410	71,650	70,300	71,195
9	C6 - Sport and Exercise Science	57,355	59,285	54,860	58,750	67,070
10	N1 - Business studies	60,330	64,830	59,580	61,020	65,715
11	L5 - Social Work	80,435	79,435	65,180	60,980	63,770
12	B9 - Others in Subjects allied to Medicine	51,785	61,940	58,300	59,885	62,970
13	V1 - History by Period	50,070	50,350	48,525	51,105	52,935
14	Q3 - English studies	60,390	57,450	52,565	52,155	51,595
15	L1 - Economics	48,005	51,425	50,225	51,585	51,270

21. Glossary

Term	Definition
Acceptance	An applicant who at the end of the cycle has been placed for entry into higher education.
Acceptance Rate	The number of acceptance divided by the number of applicants.
Adjustment	An acceptance route where applicants who have met and exceeded the conditions of their firm choice to take up an alternative offer.
Age	Derived from date of birth declared by the applicant, age is aligned with the cut off points for school/college cohorts within the different administrations of the UK.
Clearing	An acceptance route available late in the applicant cycle.
Conditional Firm	An offer made by a provider dependent on achieving specified conditions which has been accepted by the applicant as their first choice.
Conditional Offer	Offer made by provider depend on meeting specified conditions which may include academic and/or non academic conditions.
Extra	An acceptance route where applicants who held no offers after using all five main scheme choices, make additional choices.
Firm Choice	An offer made by a provider which has been confirmed by the applicant as their first choice. These can be either condition or unconditional.
Insurance Choice	An offer made by a provider which has been confirmed by the applicant as their second choice, in case the conditions of the firm choice are not met. These can be either conditional (dependent on achieving specified requirements) or unconditional (no further requirements to be met).
Main scheme	The main UCAS application scheme through which up to five providers/courses can be applied to. This opens in September and closes to new applications on 30 June the following year.
Offer	Provider decision to grant a place to an applicant; may be subject to satisfying academic and/or other criteria. Based on choice state at the June 30th deadline.
Provider	A higher education provider - a university or college.
Provider Tariff Group	The grouping of providers based on the average levels of attainment of their accepted applicants (summarised through UCAS Tariff points) in a period of application cycles spanning from 2004 to 2011. Each group of providers accounted for around a third of all UK 18 year old acceptances in these cycles. Split by the following values: 'Higher', 'Medium', 'Lower'.
RPA	Record of Prior Acceptance, where an application is submitted to UCAS by a provider when an unconditional firm has been offered and accepted by the applicant.
Tariff	A numerical summary of qualification level.
Unconditional Offer	Offer made by provider when it is satisfied that the applicant has met specific conditions.